



CARBURETTOR Tillotson HS-325A



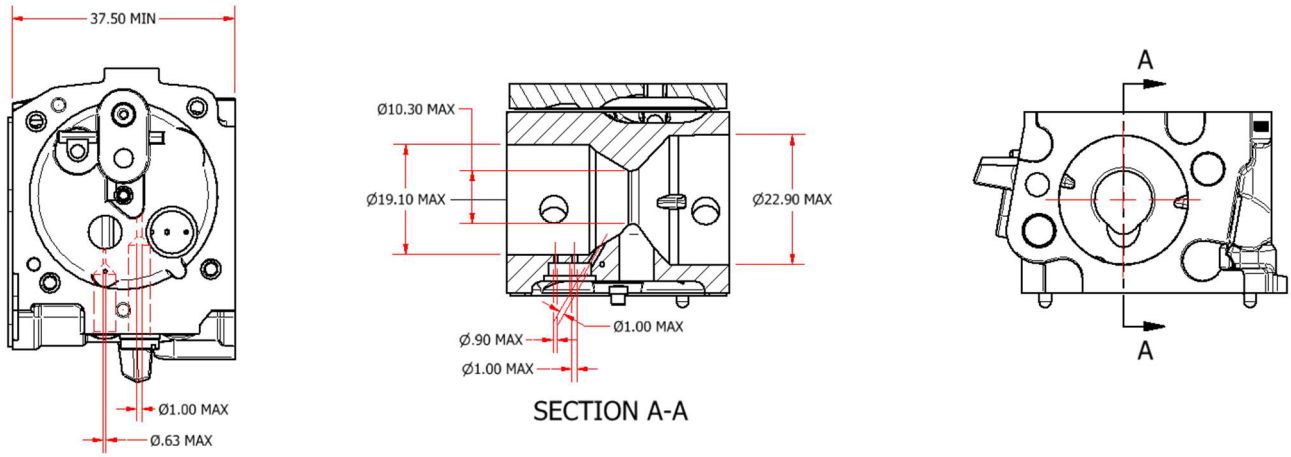
PHOTO OF ADJUSTING SIDE



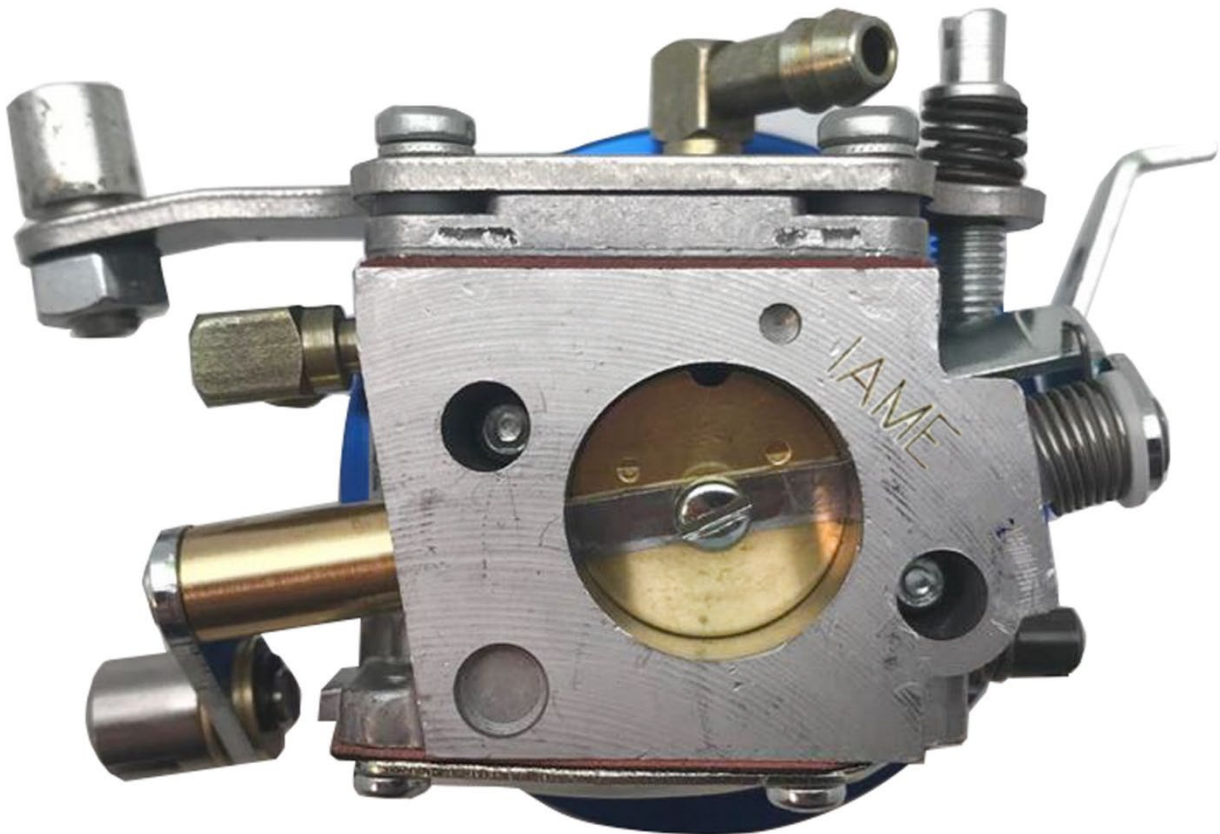
PHOTO OF INLET SIDE

Manufacturer	TILLOTSON LTD.
Make	TILLOTSON
Model	HS-325A


SECTION VIEW



MARKING

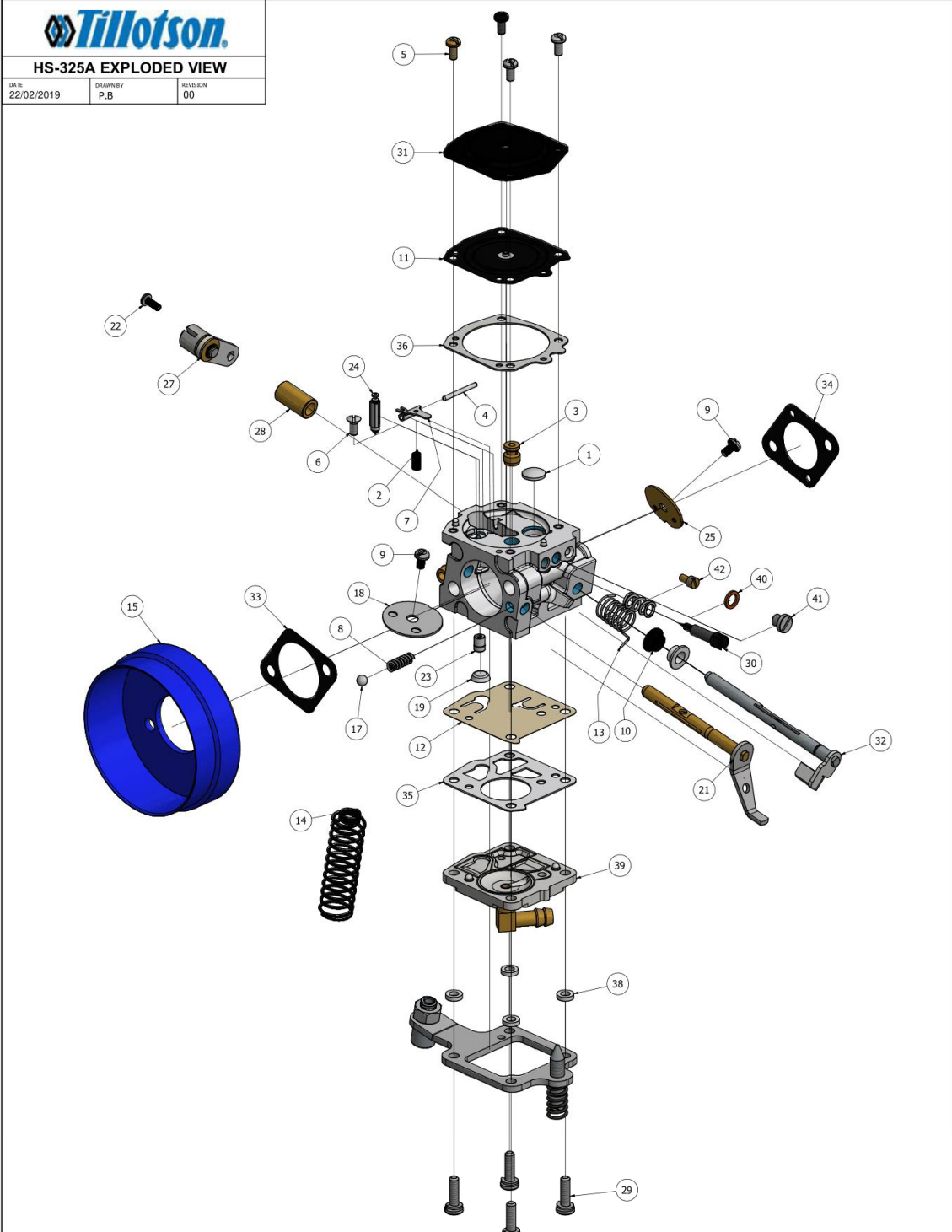


CARBURETTOR DESCRIPTION AND SKETCH OF PARTS



HS-325A EXPLODED VIEW

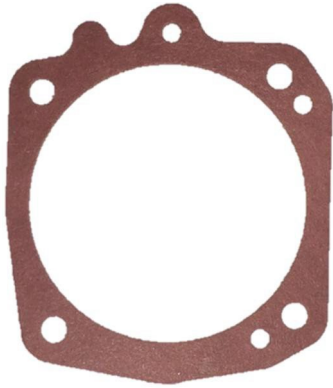
DATE 22/02/2019	DRAWN BY P.B	REVISION 00
--------------------	-----------------	----------------



ITEM	QTY	PART NUMBER	DESCRIPTION	ITEM	QTY	PART NUMBER	DESCRIPTION	ITEM	QTY	PART NUMBER	DESCRIPTION
1	1	179-59	* WELCH PLUG	18	1	27-392	CHOKE SHUTTER	35	1	16-B514	+* PUMP GASKET (ORANGE)
2	1	24-B323	INLET TENSION SPRING 26g	19	1	95-177	FILTER SCREEN	36	1	16-B513	+* METERING GASKET (ORANGE)
3	1	363-598	CHECK VALVE	20	1	68-307	FUEL CONNECTOR	37	1	24-B449	ADJUSTMENT SCREW SPRING
4	1	32-78	FULCRUM PIN	21	1	26-1279	CHOKE SHAFT & LEVER ASSEMBLY	38	4	78-A351	NYLON WASHER
5	4	15-C19	4-40 UNC SCREW	22	1	15-B348	3-48 UNC SCREW	39	1	91-1036	PUMP COVER ASSEMBLY
6	1	15-B345	FULCRUM PIN SCREW	23	1	36-A33	INLET SEAT	40	1	16-B184	RUBBER WASHER
7	1	155-A71	* FULCRUM LEVER	24	1	34-216	+ INLET NEEDLE	41	1	15-C135	SCREW - CAP
8	1	24-B281	SPRING	25	1	14-A133	THROTTLE SHUTTER	42	1	49-B134	FIXED JET - .43MM
9	2	15-C20	4-40 UNC SCREW	26	1	219-D281	MACHINED BODY				
10	2	102-204	PLASTIC SLEEVE	27	1	12-1228	THROTTLE LEVER & SWIVEL ASSEMBLY				
11	1	237-653	+* METERING DIAPHRAGM	28	1	102-236	BRASS SLEEVE			*	REPAIR KIT CONTENTS
12	1	237-143	+* TEFLON PUMP DIAPHRAGM	29	4	15-C127	6-32 SCREW & LOCK WASHER			+	DIAPHRAGM & GASKET SET CONTENTS
13	1	24-C29	THROTTLE RETURN SPRING	30	1	43-A268	M4 X 0.5 ADJUSTMENT SCREW			RK-28HS	REPAIR KIT
14	1	24-C334	CABLE RETURN SPRING	31	1	91-A274	METERING COVER			DG-7HS	DIAPHRAGM & GASKET SET
15	1	SA-506	CHOKE TRUMPET	32	1	13-2160	THROTTLE SHAFT & LEVER ASSEMBLY				
16	1	136-569	CABLE BRACKET ASSEMBLY	33	1	16-B384	+* FLANGE GASKET (CHOKE)				
17	1	206-121	BRASS BALL	34	1	16-B228	+* FLANGE GASKET (THROTTLE)				

PARTS OF CARBURETTOR

REF.36 - P. N°16-B513
DIAPHRAGM GASKET (ORANGE COLOR)



Thickness = 0.5 ± 0.1 mm

REF.35 - P. N° 16-B514
PUMP DIAPHRAGM GASKET (ORANGE COLOR)



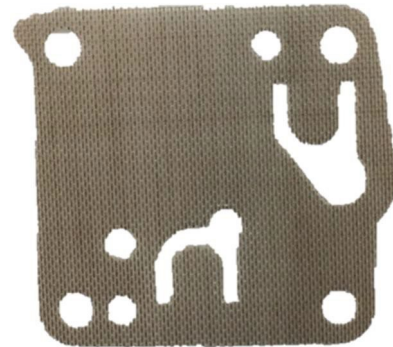
Thickness = 0.5 ± 0.1 mm

REF.11 - P. N°237-601
DIAPHRAGM



Thickness = 0.15 ± 0.05 mm

REF.12- P. N°237-143
PUMP DIAPHRAGM



Thickness = 0.21 ± 0.05 mm

REF.31 - P. N° 91-A274
DIAPHRAGM COVER



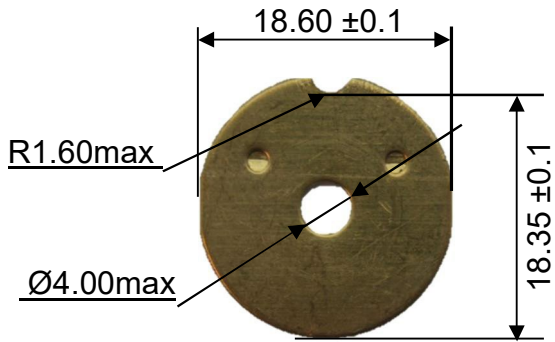
Thickness = 3.10 ± 0.15 mm

REF.39 - P. N° 91-1036
PUMP COVER



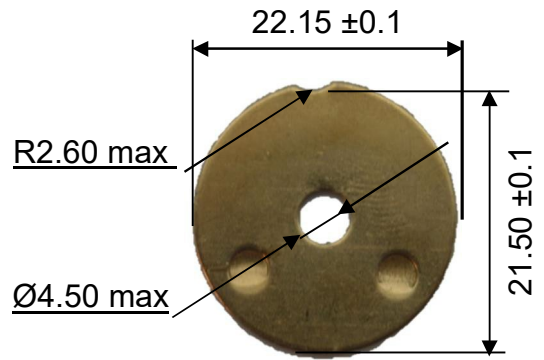
Thickness = 6.30 ± 0.15 mm

**REF.25 - P. N° 14-A135
THROTTLE SHUTTER**



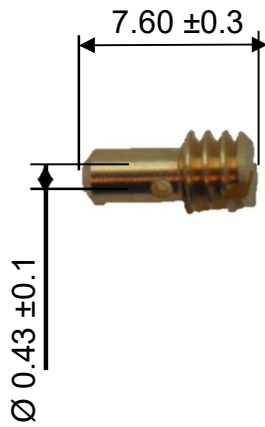
Thickness = 0.81 ± 0.1 mm

**REF.18 - P. N° 27-392
CHOKE SHUTTER**



Thickness = 0.81 ± 0.1 mm

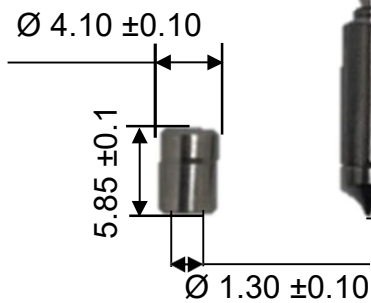
**REF.42 - P. N° 49-B134
NEEDLE LOW SPEED**



**REF.30 - P. N° 43-A268
NEEDLE HIGH SPEED**



**REF.23 - P. N° 36-A33
INLET SEAT**



**REF.24 - P. N° 34-216
INLET NEEDLE**



**REF.15 - P. N° SA-506
CHOKE TRUMPET**

